

RE Compass



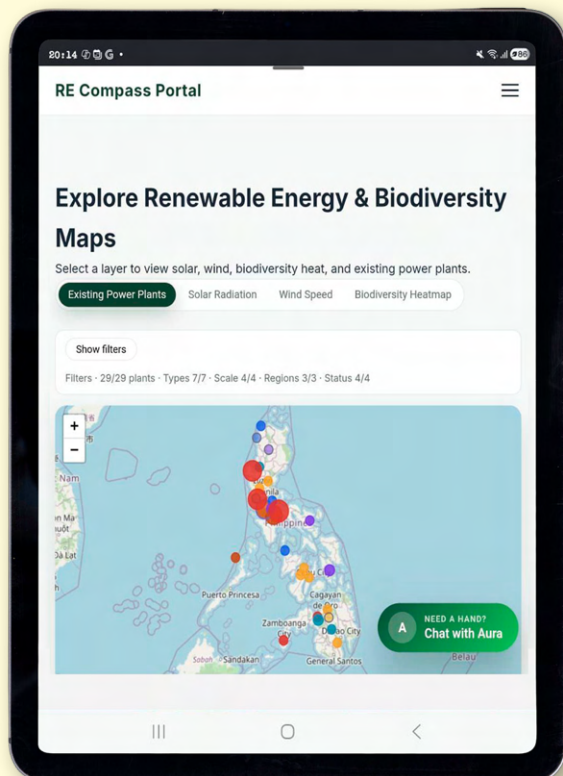
Responsible
Energy
Initiative
Philippines

What is RE Compass?

The acceleration of the Philippine renewable energy (RE) transition is severely constrained by fragmented data, low transparency, and weak coordination. Critical information on biodiversity, land tenure, community rights, and regulatory processes is scattered across silos, fueling mistrust, heightening conflict risk, and slowing down permitting. This leaves key stakeholders, from communities to developers, without a reliable basis for responsible decision-making, which obstructs a just and regenerative scale-up of RE.

RE Compass is a co-created, nationwide digital platform designed to address this. It integrates authoritative ecological, social, and governance data into a single, trusted, interactive map. By consolidating government, developer, and community-generated inputs, the platform enables users to visualize risks, track projects, and strengthen accountability. More than a map, it is a governance tool designed to guide the energy transition away from opaque practices toward shared evidence and responsibility.

The core mutual benefit is shared clarity: all stakeholders see the same credible, up-to-date information. This systemic value transforms data into collective power, providing a national, regenerative planning tool that reduces uncertainty, speeds government decisions, prevents conflict, and ensures RE development is faster, smarter, and fairer for communities and ecosystems.



About the Platform

RE Compass is a guiding and navigational tool for responsible, just, and regenerative renewable energy development in the Philippines. Its core is an interactive, map-based interface that integrates essential data layers: renewable energy project data, biodiversity layers, land and marine use information, community insights, and governance indicators.

The platform will be built on an open-source geospatial foundation combined with custom APIs and dashboards tailored to the Philippine context. It is designed to integrate three types of contributions:

Authoritative Data: Primary technical datasets from government agencies, developers, and utilities.

Local Inputs: Community-generated inputs gathered through simple citizen science tools.

Validation & Oversight: Research, validation, and accountability inputs from civil society and biodiversity experts.

A multi-stakeholder governance consortium will be established to oversee data standards, ethical use, and the platform's evolution.



Scan the QR code for more
information on REI Philippines

Three streams, one circuit

Powering a just, regenerative energy future.

How does RE Compass translate collective input into shared benefits?



Communities gain clear visibility into proposed and existing RE projects, helping them understand impacts on livelihoods, ecosystems, and local rights. Access to credible, integrated data strengthens their ability to participate in decision-making, assert protections, and advocate for just and regenerative outcomes.

Developers gain early visibility into ecological sensitivities, social risks, and permitting constraints, allowing them to design projects that avoid conflict and secure social license. Better access to integrated data reduces uncertainty, strengthens ESG performance, and builds investor and community trust.

Government agencies receive a unified, verified evidence base that supports faster, more coherent, and conflict-sensitive planning across energy, environment, and land-use sectors. The platform improves transparency and accountability, enabling more informed permitting, monitoring, and policy development.

DATA CREDIBILITY

Datasets must be verified, up-to-date, and properly sourced; with clear attribution and vetting protocols for community or third-party inputs.

TRANSPARENCY & ETHICS

Open documentation of data sources and updates; protective of sensitive and indigenous data.

SUSTAINABILITY & INTEROPERABILITY

Scalable, long-term platform that connects with DENR, RE Hub, and finance systems.



ACCESSIBILITY & USABILITY

Simple, user-friendly interface; multi-language, low-bandwidth, with offline functions for inclusivity, and modular filtering to tailor data views.

SHARED GOVERNANCE

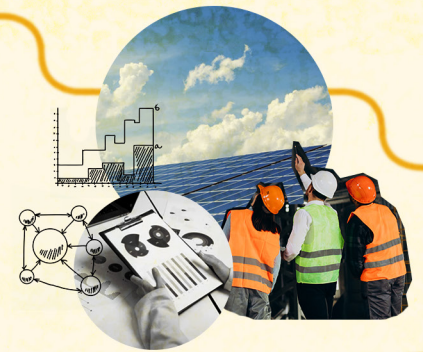
Governed by a multistakeholder consortium to ensure neutrality.

ACTIONABILITY

Data must support decision-making, compliance, and conflict resolution; includes tools for mapping, overlays, and scenario planning.

GOVERNMENT

Government agencies provide authoritative data, regulatory mandates, and planning frameworks that anchor responsible renewable energy development. Their role ensures accountability, coherence, and alignment with national environmental and energy goals.



DEVELOPERS

Developers supply technical expertise, project data, and investment resources essential for scaling renewable energy responsibly. Their engagement helps integrate environmental safeguards, reduce conflicts, and build projects that earn social license.

COMMUNITIES

Communities contribute lived experience, traditional knowledge, and citizen-generated data that reveal on-the-ground realities and social risks. Their participation ensures the transition centers on rights, equity, and the protection of local livelihoods.



RE Compass translates credible, inclusive data into shared benefits for communities, developers, and government through a principled, multi-stakeholder platform.